

USER MANUAL

Model: LMDT-609

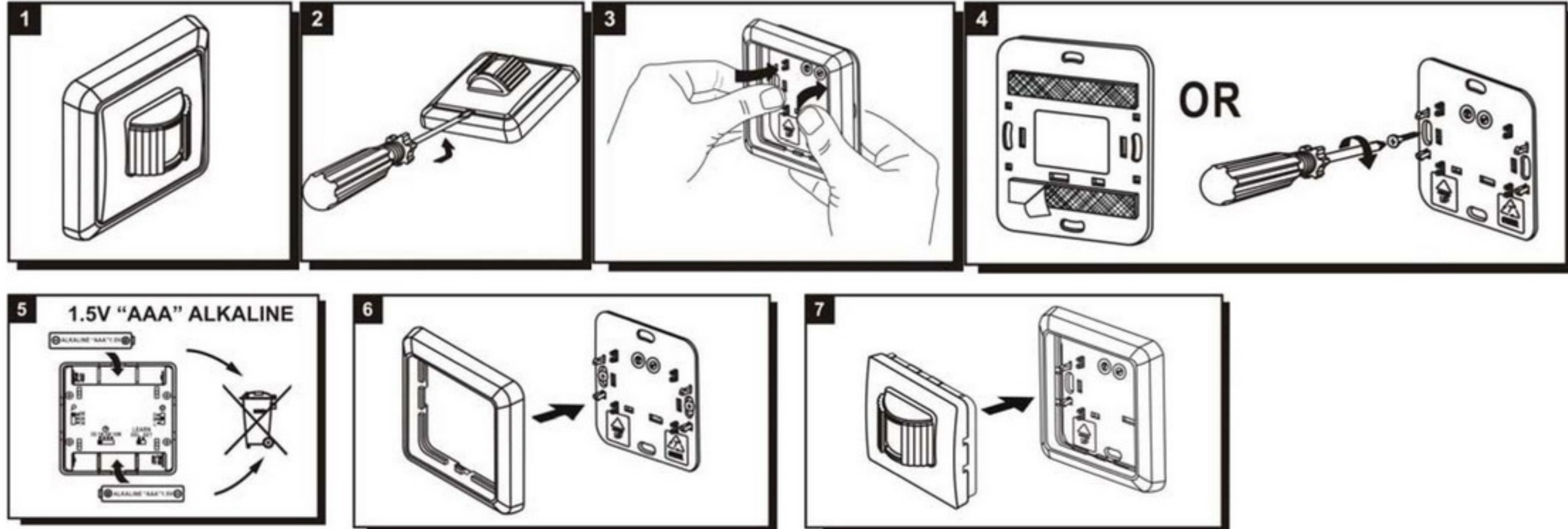
Self program motion detector transmitter for indoor use

FEATURES:

- * 67 million codes combination, no interference from neighbors.
- * Easy operation, no wiring, battery operated.
- * Indoor use, compatible with all KAPPA self program type receivers linking with lamp, light or door chime as home safety system.
- * Delay-off time switch design. When time out, LMDT-609 sends signal to switch off receiver.

INSTALLATION:

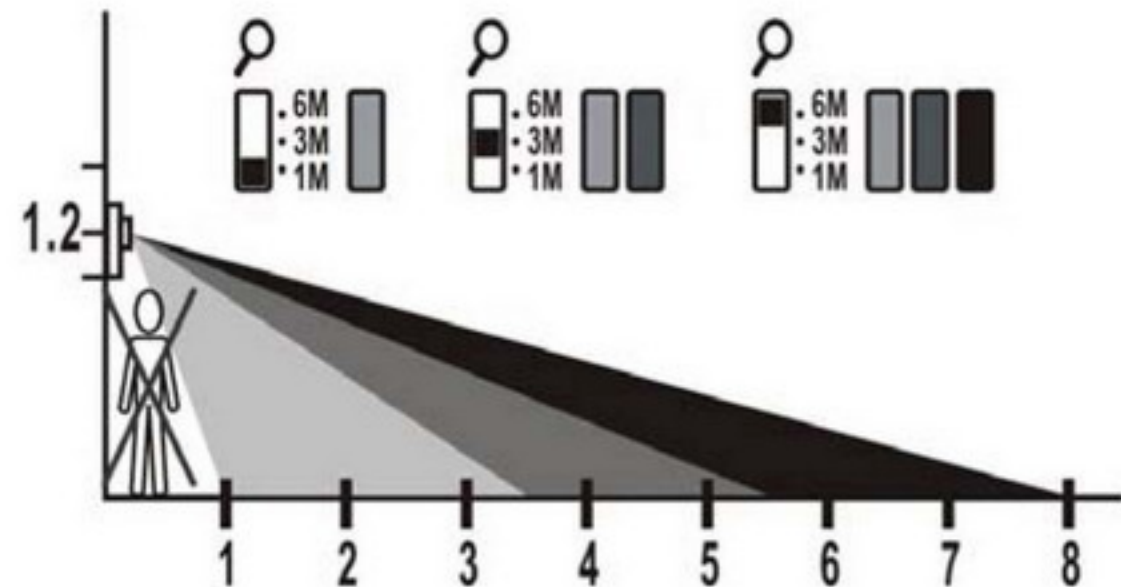
A. INSTALLATION STEPS:



1. LMDT-609
2. Take-off main part by using ‘—’ minus type screwdriver.
3. Pushing base to take apart frame from base.
4. Stick double-side tape on the back of base to stick on the wall or screw base to the wall. (double-side tapes and screws are included ex-factory)
5. Install batteries, AAA 1.5V Alkaline x 2 pieces (excluded ex-factory).
6. Mount back frame to the base.
7. Mount back main part to the base with frame.

B. INSTALLATION HEIGHT

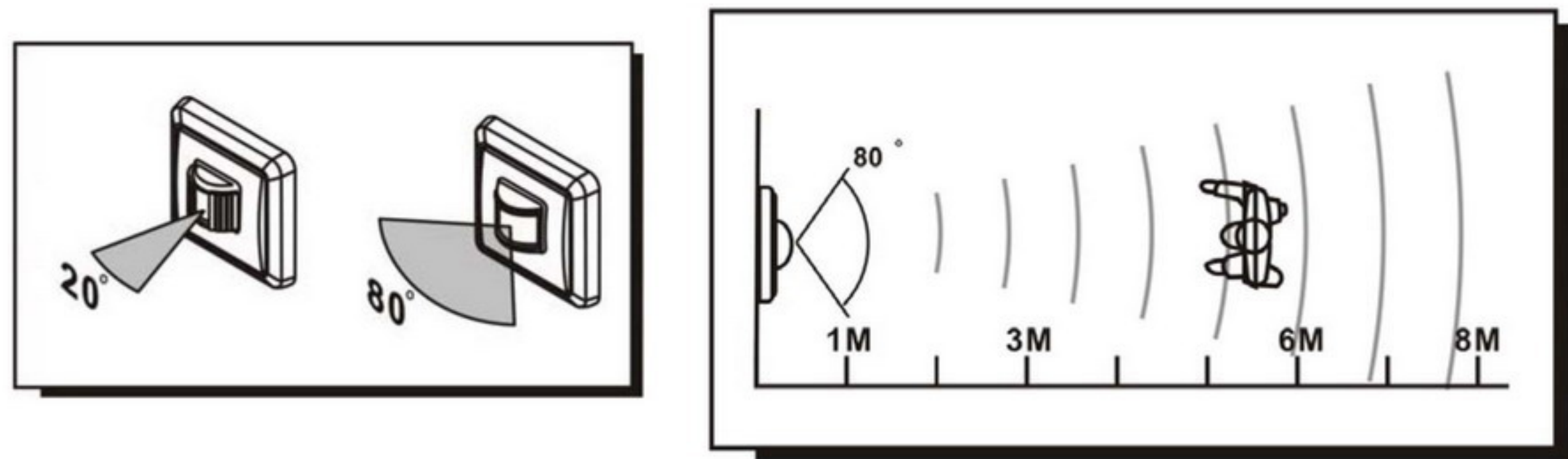
- Install LMDT-609 at the 1.2M height of wall (suggested).
- Object detection range by three distance selections:
 - 1M – within 1~3 meter.
 - 3M – within 1~6 meter.
 - 6M – within 1~8 meter.



C. DETECTION ANGLE

- Vertical – max. 65 degree

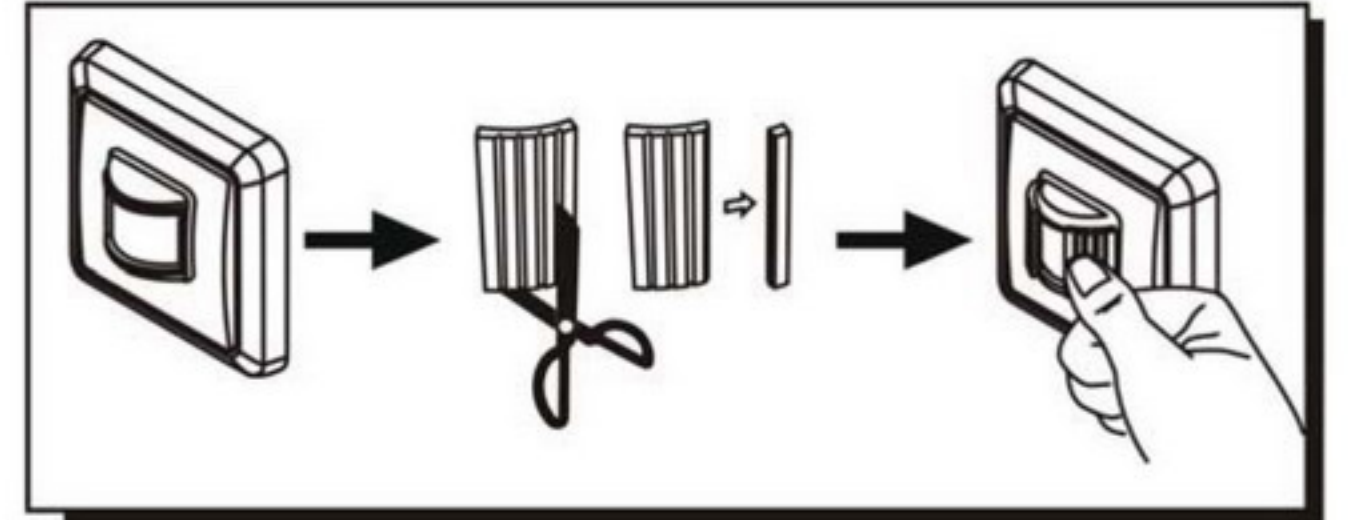
- Horizontal – max. 80 degree without lens-cover ~ max. 20 degree with lens-cover uncut (ex-factory device).



D. USAGE OF LENS-COVER

Lens-cover is optional usage.

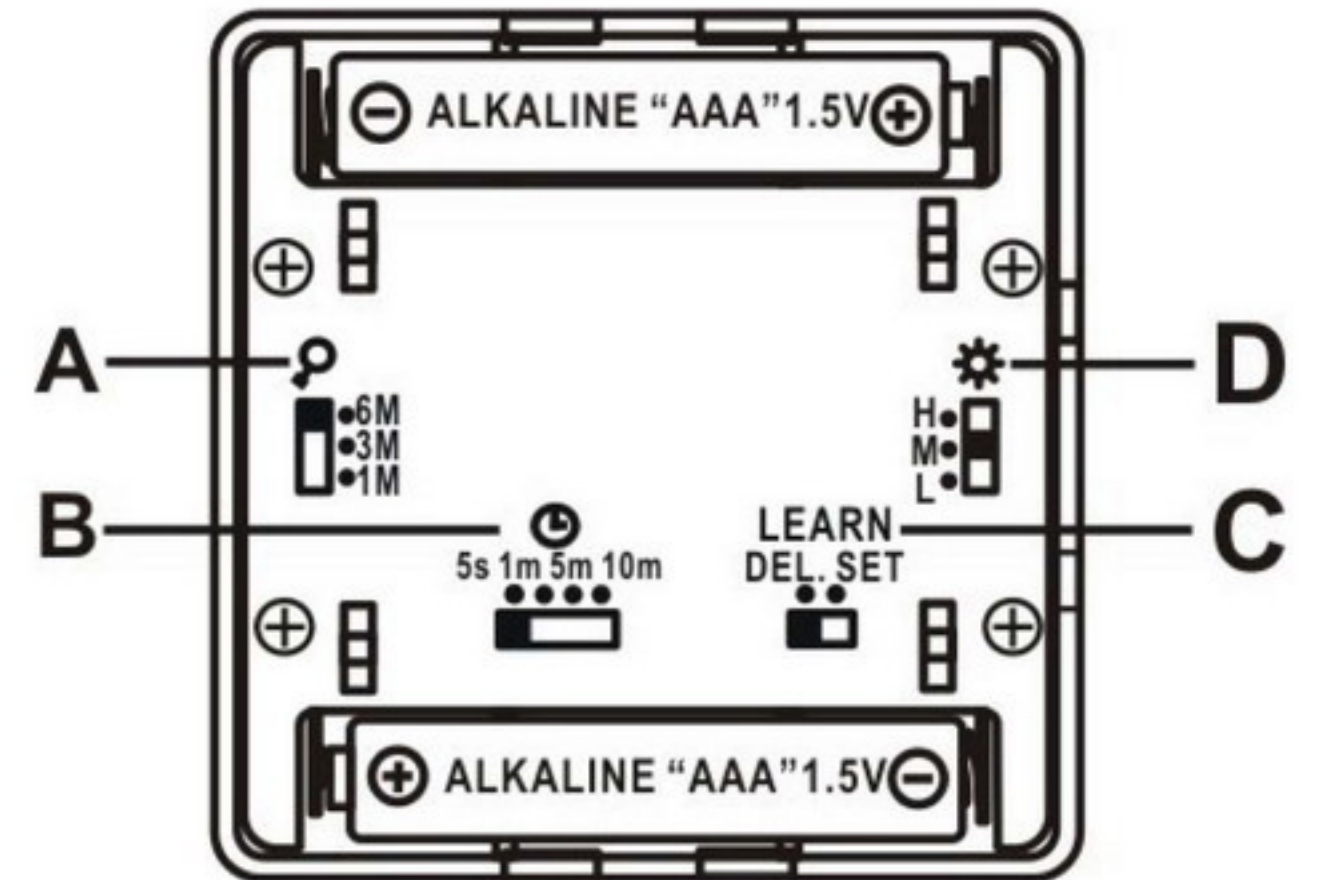
- With full lens-cover as ex-factory device is fine (max. 20 degree detecting angle).
- Or cut lens-cover as user's demand of detecting angle (the narrower lens-cover, the wider detecting angle)
- Or use no lens-cover at all (max. 80 degree detecting angle).



FUNCTION OF SWITCHES:

A. Detecting Distance Switch: adjust detecting distance by 3 selections – *1M/3M/6M (meter)*.

Within each chosen distance range, object can be detected. According to the height of detected object, the detecting distance has to be adjusted as well. For the lower/shorter object detection comparing with higher/taller object detection in the same place, the higher meter selection is suggested because the detection capability and sensibility is better.



B. Delay-off Time Switch: 4 selections – *5sec./1min./5min./10min.*

Each selection means by this time period ends, LMDT-609 sends ‘OFF’ signal to receiver to switch off receiver also its linked lamp or light. (Door chime is not restricted by delay-off time). As long as LMDT-609 detects an object again, it sends ‘ON’ signal to receiver to switch on receiver also its linked lamp, light or door chime again. The delay-off time counts down when object stops movement.

C. Learn Switch: DEL/SET 2 alternatives.

DEL means delete learning code from compatible receiver.

SET means set up learning code with compatible receiver.

Angle of detection:

vertical- max. 65 degree

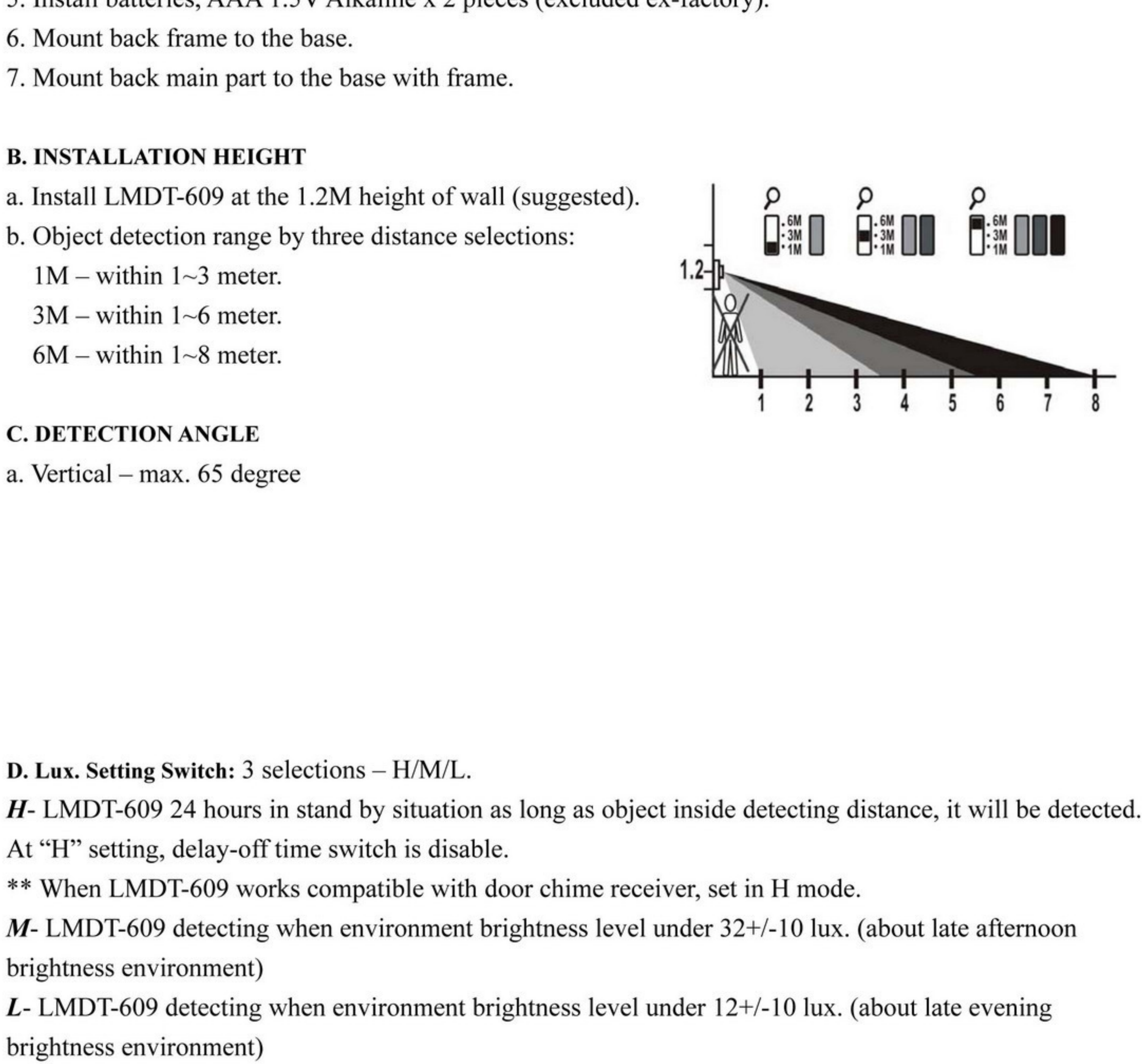
horizontal- max. 80 degree without lens-cover ~ 20 degree with lens-cover uncut (ex-factory).

TROUBLE SHOOTING:

- No activation: check battery life or polarity/ or unsuccessful linking.
- Receiver stay ON continuously: LMDT-609 may be suffering from false activation. Adjust the position/angle of the detector to solve the problem.

**** Note:** After installation, please check LMDT-609 is working properly by all switch settings with compatible self program receiver.

Fresh AAA (1.5V) battery by 2 pieces to install to LMDT-609 is important as providing stable current voltage to LMDT-609 thus enhance detection and transmission capability. Also both 2 pieces fresh batteries can keep each other battery life as long as it should be.



D. Lux. Setting Switch: 3 selections – H/M/L.

H- LMDT-609 24 hours in stand by situation as long as object inside detecting distance, it will be detected. At “H” setting, delay-off time switch is disable.

****** When LMDT-609 works compatible with door chime receiver, set in H mode.

M- LMDT-609 detecting when environment brightness level under 32+/-10 lux. (about late afternoon brightness environment)

L- LMDT-609 detecting when environment brightness level under 12+/-10 lux. (about late evening brightness environment)

OPERATION:

A. Code learning:

1. Bring LMDT-609 in ‘DEL’ mode near to self program receiver which will work with.
2. Press learning button of the receiver, LED blinks continuously.
3. Slide LMDT-609 learn switch from ‘DEL’ to ‘SET’, LMDT-609 sends code to receiver.
4. Receiver linked lamp blinks twice to confirm the code learned. Receiver LED stops blinking.

B. Set up Detecting Distance Switch (1M/3M/6M) as selection. (See FUNCTION OF SWITCHES)

C. Set up Delay-off Time Switch (5sec./1min./5min./10min) as selection. (See FUNCTION OF SWITCHES)

D. Set up Lux. Setting Switch (H/M/L) as selection. (See FUNCTION OF SWITCHES).

Be noticed whether there is light around to influence the environment brightness and affect the Lux. setting choice. For example, in the late evening, the lux. setting is ‘L’ choice. However, a lamp around in the environment where LMDT-609 would detect, user may change lux. setting to be ‘M’ choice.

E. Code deletion:

Purpose of code deletion: user doesn’t want LMDT-609 to work compatible with a certain receiver. In this case, user should delete LMDT-609 code from the limited memories of the self program receiver to release the memory to the next transmitter code setting.

1. Bring LMDT-609 in ‘SET’ mode near to self program receiver which works with.
2. Press learning button of the receiver, LED blinks continuously.
3. Slide LMDT-609 learn switch from ‘SET’ to ‘DEL’, LMDT-609 sends code to receiver.
4. Receiver linked lamp blinks twice to confirm the code deleted. Receiver LED stops blinking.
5. LMDT-609 and receiver do not link.

TECHNICAL SPECIFICATION:

Detecting Distance: > 1M/3M/6M

Delay-off Time: 5sec./1min./5min./10min

Learn Switch: in ‘DEL’ mode when LMDT-609 ex-factory.

Brightness lux. setting: H/M/L

Frequency: 433.92 MHz

Transmitting distance with receiver: 20M closed area

Battery: 3V DC Alkaline battery AAA (1.5V) x 2 (Excluded in LMDT-609 ex-factory)