

USER MANUAL

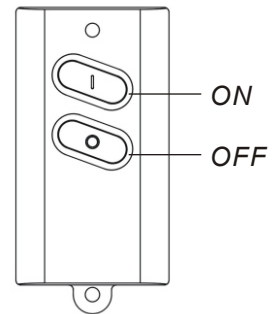
Model KCT-510

FEATURES

- **ON/OFF control key chain transmitter.**
- Compatible to all Kappa receivers.
- **Control 1 receiver**
- Remote control range 30M closed area.
- Selectable 4 coding channels 'A-B-C-D' and max. 4 individual receiver '1,2,3,4'.
- CR2032 battery operated

OPERATION:

- **ON/OFF function :**
- Press 'ON' button for ON and 'OFF' button for OFF.



CHANGE BATTERY:

- Open the cabinet with a small screw. (fig. 1)
- Push down the battery (fig. 2)
- Check battery polarity before closing the cabinet.

fig.1

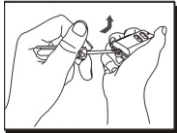
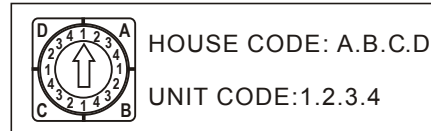
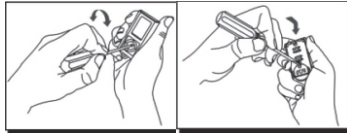


fig.2



USAGE OF CODE SWITCH

House Code -

Only links to 'A-B-C-D' Kappa system

Also a linking code for **SYSTEM** control or extension

Unit Code

Only links to receiver set in **UNIT CODE '1,2,3,4'**.

SPECIFICATION:

Frequency: 433.92MHz

Battery: CR2032 (included)

Channels: 4 codings

FAULT FINDING

No activation:

Check battery direction or running out battery

Check coding channel. Receiver switch code must be identical with transmitter

Check remote distance within limit, shielding door, window, partition etc..

KAPPA SYSTEM

